

Fire Risk Assessment

Fire Risk Assessment of:	Unit 82, Castleham Road, St Leonards on Sea
Report Completed By:	Ian Warne
Date:	20 th October 2020

Introduction

A 1970-80's concrete beam and block façade. 5,000 square feet. Asbestos panel roof.

Offices and toilet block to the front of the building.

Hallway to small kitchen area and two further offices which were added later.

No sprinklers. Fire alarm fitted. Intruder alarm fitted.

Fire door to rear of building, rear windows are barred.

Main entrance to factory space, timber fire door.

At the front of the building is a personnel and roller shutter door into gated compound. Within the gated compound is a bunded liquid storage cabinet.

Summary of significant Hazards

Storage of chemicals

Risk of fire caused by smoking.

Gas Forklift Truck

Electrical system.

Preventative Measures

Building is manned

Ensure chemical segregation and up to date computerised storage location records are maintained at all times.

Do not store chemicals above the allowable thresholds.

Ensure combustible materials are not stored near to the building or in the yard (e.g. packaging and pallets).

Smoking is not permitted in the building or the yard.

Ensure the FLT is serviced and maintained regularly. Ensure the FLT is only driven by trained and authorised personnel. Ensure the daily/weekly checks are undertaken and documented.

Lights have been rewired, 5 year fixed wiring test completed in 2020.

Protective measures

Fire alarm newly installed.

Intruder alarm

Camera's installed.

Site is bunded appropriately.

Measures to allow Evacuation

Fire doors

Emergency Lighting.

Recommended Actions To Be Implemented by Directors

Ensure maintenance checks are done and documented.

Recommended Timescales To Implement Aforementioned Actions.

Ongoing

Conclusion

Site has recently been refurbished and all necessary fire prevention protocols have been put in place.

Completed by: Ian Warne

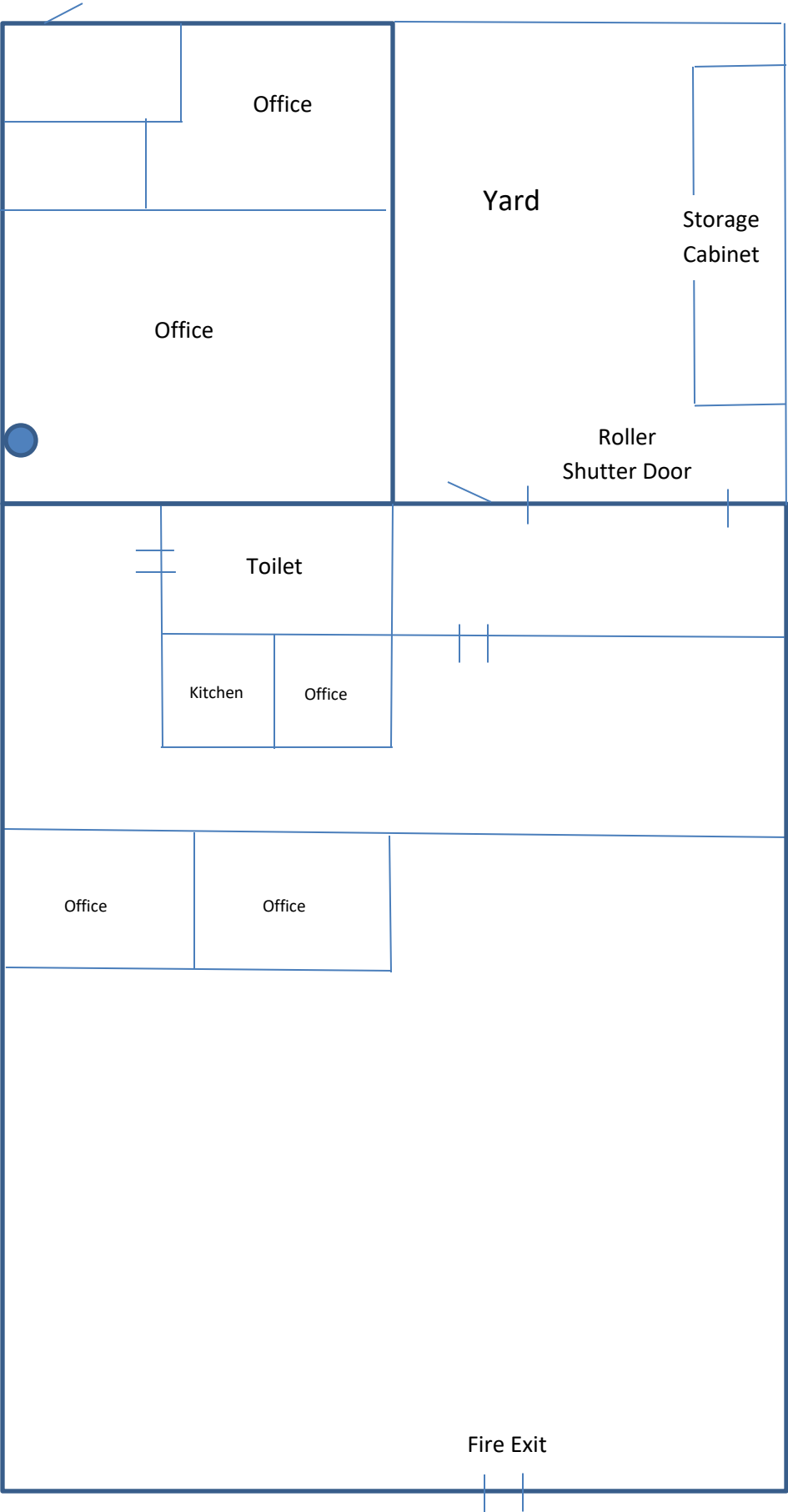
Signed: Date:

Viewed By Edward Campbell-Salmon

Signed: Date:

Viewed By: Clare Crouch

Signed: Date:



Fire Alarm
and Intruder
Alarm

Office

Yard

Storage
Cabinet

Office

Roller
Shutter Door

Toilet

Kitchen

Office

Office

Office

Fire Exit