

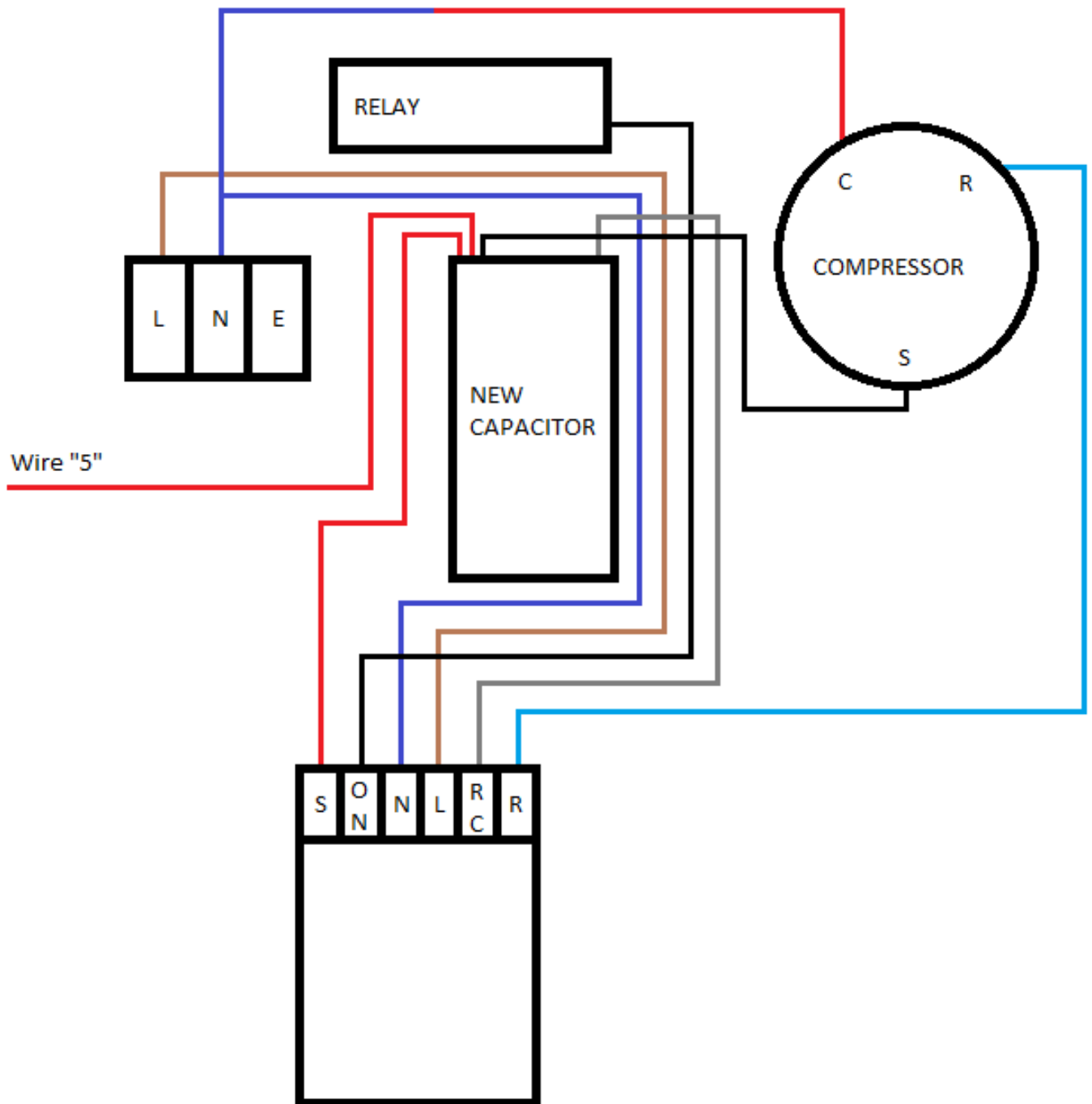


Heat Seeker[®]

17kW *HeatSeeker* Soft Start

Installation Manual

Plastica Ltd



17kW *HeatSeaker* Soft Start Installation

The installation of the HeatSeaker soft start system should only be installed by a qualified electrician.

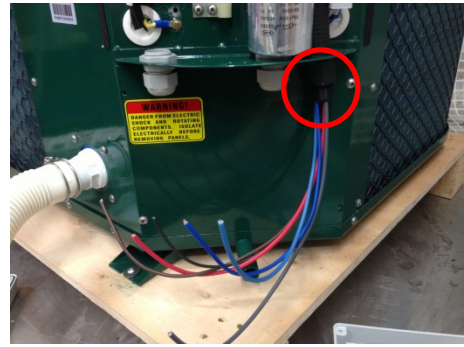
Before attempting to wire the system, it is essential to isolate the electricity to the heatpump.

Important information

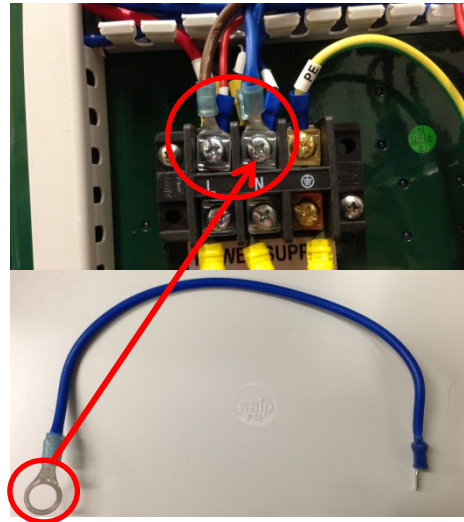
The HeatSeaker Soft Start system will consistently lower your initial start up current, typically starting at 30a to 35a as opposed to as high as 80a.

The Soft Start takes up to 6 minutes to set before it is capable of starting the compressor. As the HeatSeaker only takes around 2 minutes to set, it's possible that sometimes the fan will kick in before the compressor. However, once the Soft Start has set, it will immediately start the compressor.

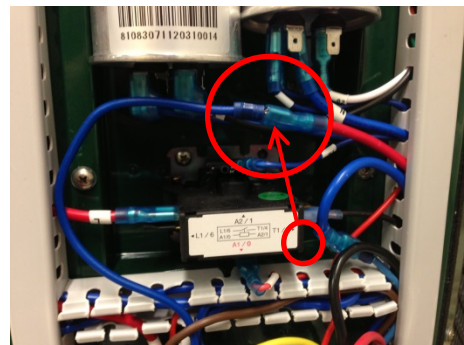
1. Remove cable gland from the right hand side of the inspection panel and pull wiring harness through.



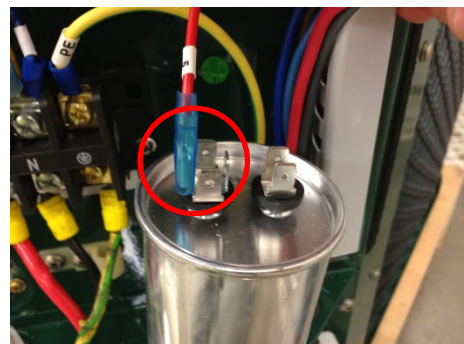
2. Connect the live and neutral (brown and blue fitted with round terminal crimp) Also add small Blue wire to Neutral.



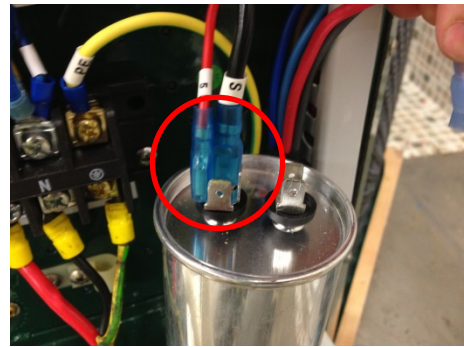
3. Remove the large red wire "C" from the right hand side of relay and connect to the small blue wire, detailed in step 2.



4. Remove wire "5" from the right hand side of relay, and connect to the new capacitor as shown.;



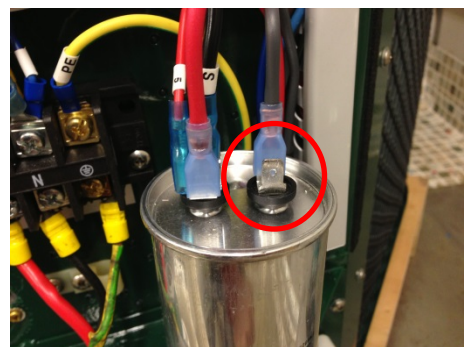
5. Remove large black wire "S" from old capacitor and connect to new capacitor with wire "5" as shown



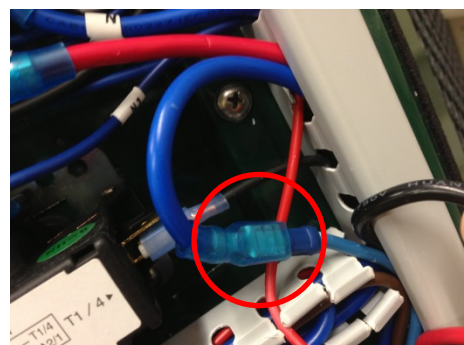
6. Connect red wire with female spade crimp in new wiring harness (wire "S" from soft start) to new capacitor with wires "5" and "S" as shown.



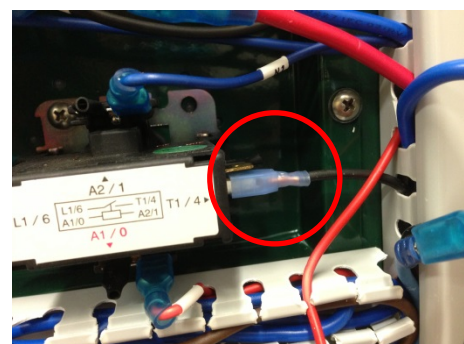
7. Connect grey wire ("RC" from the soft start) to the other side of new capacitor as shown.



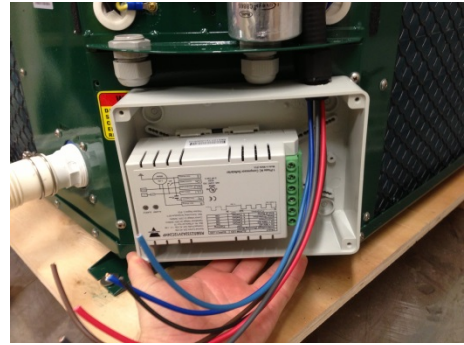
8. Remove big blue wire "R" from old capacitor to blue wire fitted with male spade ("R" from the soft start)



9. Connect black wire with female spade (wire "ON" from soft start) to the right hand side of the relay (where wire "C" was removed from in step 3)



10. Mount soft start box as shown and pull wires to their correct length allowing them to be neatly dressed into the existing conduits. Some of the tabs may have to be removed to accomplish this.



11. Connect all soft start wires as per wiring diagram

12. Clip all conduit tops back on and refit outer covers.

