

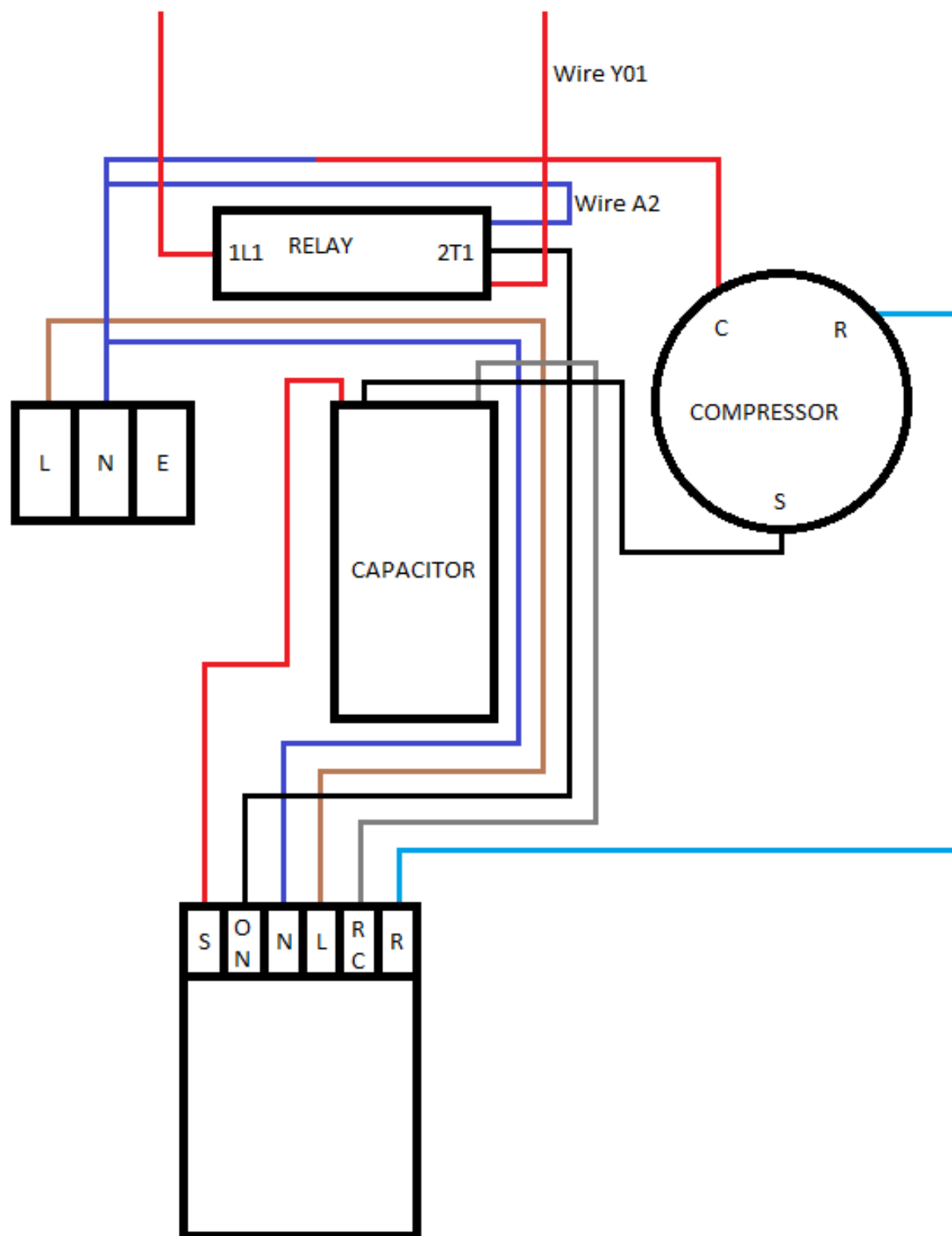


Heat Seeker®

21kW *HeatSeeker* Soft Start

Installation Manual

Plastica Ltd



21kW *HeatSeaker* Soft Start Installation

The installation of the HeatSeaker soft start system should only be installed by a qualified electrician.

Before attempting to wire the system, it is essential to isolate the electricity to the heatpump.

Important information

The HeatSeaker Soft Start system will consistently lower your initial start up current, typically starting at 40a to 50a as opposed to as high as 100a.

The Soft Start takes up to 6 minutes to set before it is capable of starting the compressor. As the HeatSeaker only takes around 2 minutes to set, it's possible that sometimes the fan will kick in before the compressor. However, once the Soft Start has set, it will immediately start the compressor.

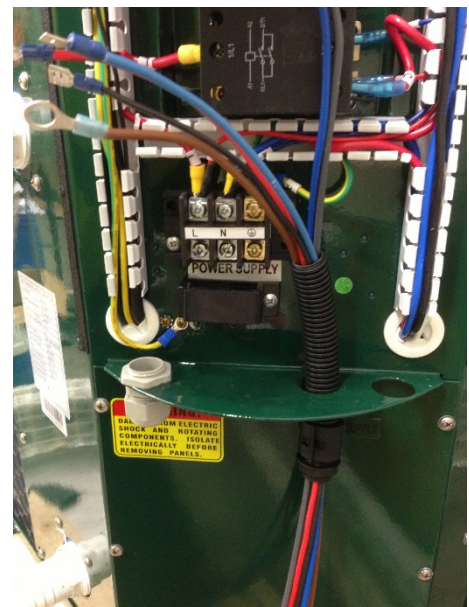
1. Remove front panel from the Heatpump.



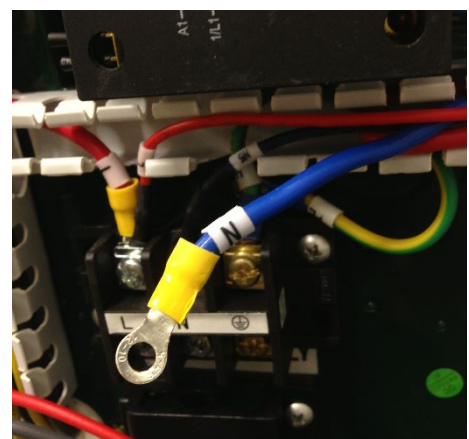
2. Remove both right hand side cable glands from the bottom of the electronics enclosure.



3. Pull the wiring harness through the hole as shown.



4. Remove the large neutral wire from the mains terminal block, and the capacitor.



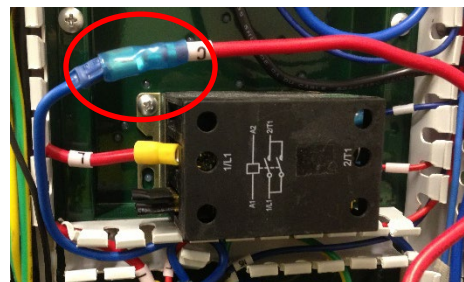
5. Connect Brown wire to L on terminal block as shown.



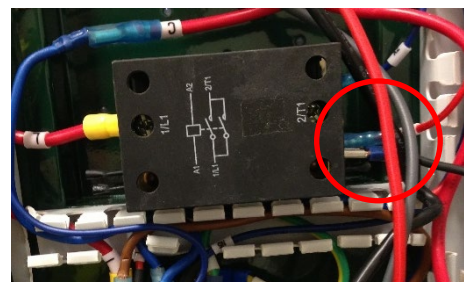
6. Connect Blue neutral wire to 'N' as shown, along with the small Blue wire and wire 'A2' from the capacitor as shown.



7. Remove red wire 'C' from the right hand side of the relay and connect to the short blue neutral wire as shown.



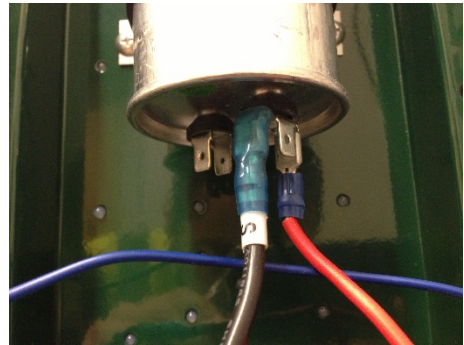
8. Connect black wire ('ON' from soft start) to the connection previously occupied by wire 'C'



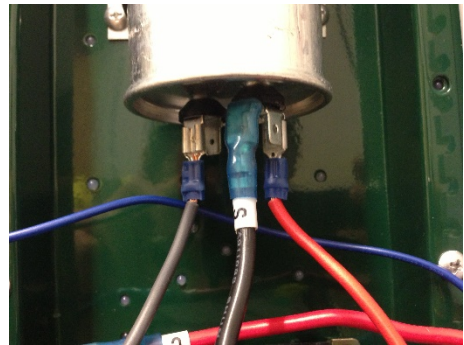
9. Remove all wires from the capacitor. Then connect wire 'S' to the capacitor as shown.



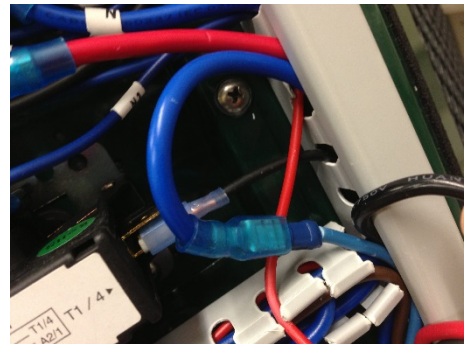
10. Connect red wire ('S' from soft start) to capacitor as shown.



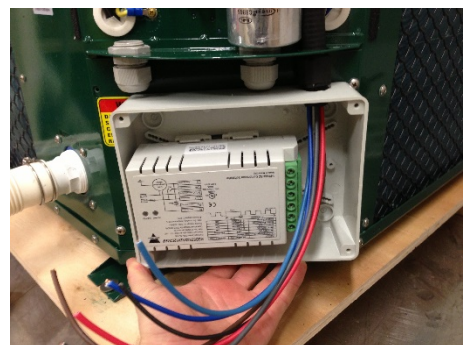
11. Connect grey wire ('RC' from soft start) to capacitor as shown.



12. Connect the big blue wire 'R' to the blue wire



13. Mount soft start box as shown and pull wires to their correct length allowing them to be neatly dressed into the existing conduits. Some of the tabs may have to be removed to accomplish this.



14. Connect all soft start wires as per wiring diagram

15. Clip all conduit tops back on and refit outer covers.



