

1. CHECK THE PACKAGE

On arrival check the packaging to ensure that the dome delivered is correct and has not been damaged in transit.

2. CLEAR THE SITE

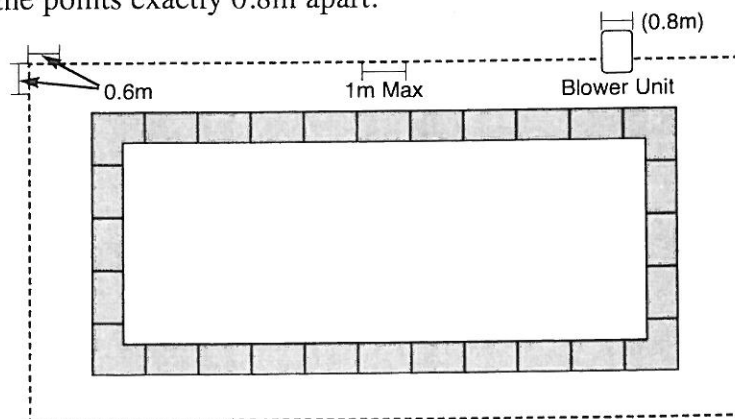
Clear the site of all items that will either get in the way or damage the dome. This includes large furniture and large objects. Thoroughly sweep the area, taking care to remove all grit and stones etc. that may damage the dome skin.

3. MARK THE OUTLINE

Mark on the ground the outline of the dome to the size ordered and the position required. Make sure the diagonals are correct and that the lines are straight. To calculate the diagonals add the square of the length to the square of the width and find the square root of this figure – e.g: for a dome **12m x 6m** the diagonal will be:

$$(12^2 + 6^2) = (144 + 36) = 180 = \mathbf{13.42}$$

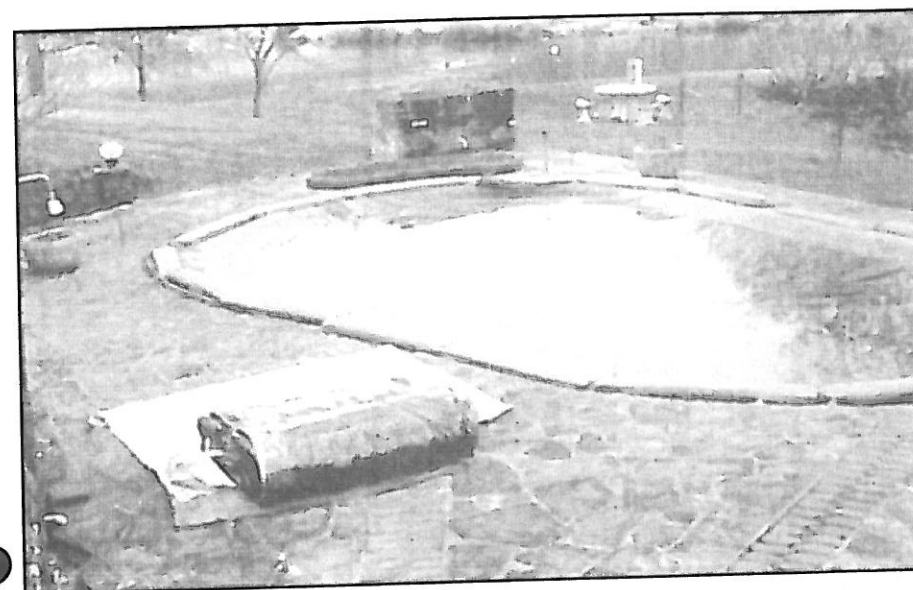
Mark, but do not drill, the position of the fixings. These start 0.6m (2') in from each corner and are equally spaced at no greater centres than 1.0m (3'3"), please refer to diagram. The fixings will require a good 100mm (4") deep concrete slab or ring beam to fix into, 150mm x 150mm (6" x 6") minimum. Where the blower is to be positioned, mark the points exactly 0.8m apart.



4. UNPACK THE AIRDOME

Carefully carry the package to the pool side taking care not to drag not abrade it. Inside the packaging is a 'carry-bag' to help move the dome easily and for winter storage. Unroll the dome itself down one length of the pool. At this point use the door positions to recognise if the dome is the correct way round. If the dome needs to be turned around, roll it back up on the Carry-Bag so that it can be lifted and turned easily. Two people can now lift and pull the dome across the pool into position.

Note: Always lift, never drag the dome.

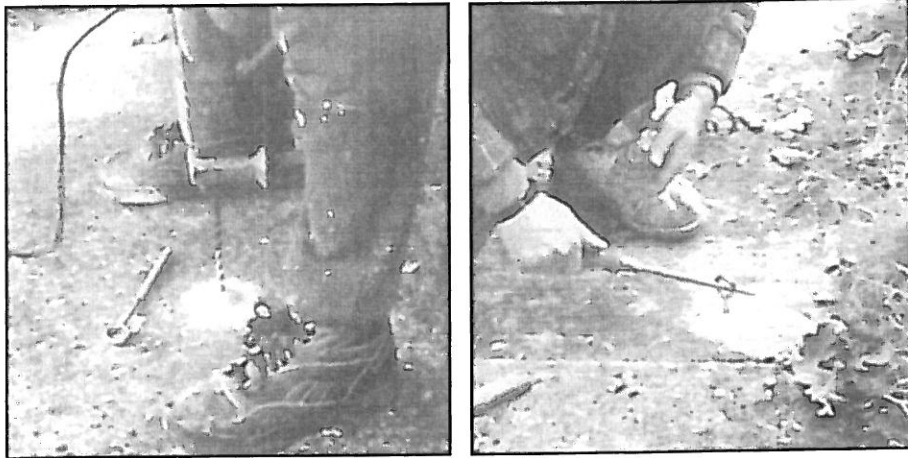


5. ALIGN DOME & POSITION BLOWER

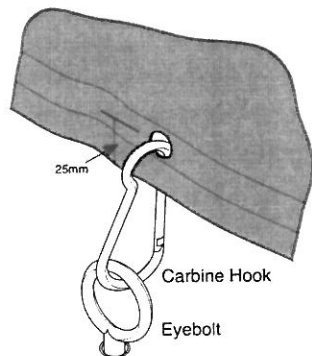
Line up the door closet to the end you intend to fix first with the position indicated on your order. There are also approximate corner markings on the dome to help. The blower should now be placed in position.

6. FIX FIRST END

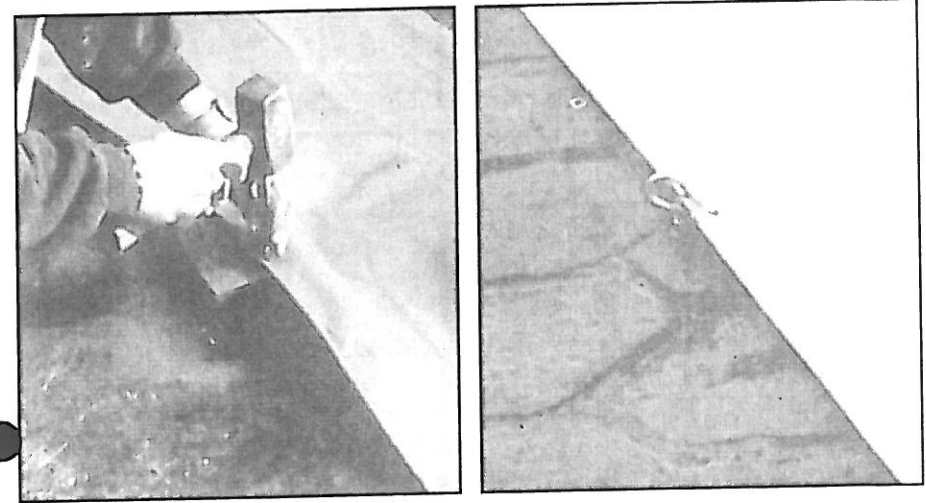
When installing the dome it is important that you start at one end and work up the length, leaving the other end until last. Drill with a good quality masonry impact 10mm (3/8") drill bit and fix eyebolts at the positions marked all apart from the last end corner fixings as shown above. Eyebolts can be screwed in using a metal bar until the eye is down to the ground and is aligned so that the hole is perpendicular to the line marked, except the eight corner fixings which will be at 45° angle.



When you are happy with the alignment, attach one end corner fixing by punching a 10mm (3/8") hole through the skirt (see diagram) and clipping the eyebolt with a Carbine Hook.



Position holes as shown here



Now tension the dome cable away from this point towards the adjacent corner by holding it level with the fixing. Fix by repeating the above process.

7. FIX THE SIDES

Drill and fix down both sides, making sure that an even tension is put on the cable before the position of the hole is marked or punched

8. ADJUST & FIX THE LAST END

The last end should be adjusted by using the size of the corner mitre. If a 0.6m (2') mitre is going to leave the last end short of the marked line, re-mark the corner fixings a little further from the corner, making the corner mitre larger and allowing the dome to be the correct length, similarly, if the dome is too long with the standard corner mitre, reduce the corners to reduce the length of the dome accordingly. When the correct corner mitre size has been found, drill and fix these two corners and the last end keeping a constant tension as before. It is not essential that the last two corners are exactly the same as the first two, more importantly the dome should be the correct length and even tension.

9. INFLATE THE DOME

The dome is now ready to inflate. The blower should be wired from an Earth leakage Circuit Breaker (E.L.C.B.) by a qualified electrician, using a minimum 1mm² x 3 core cable suitable for the conditions it is going to be subjected to. An external mains plug and socket is supplied with the blower.

Switch the blower on and, after a few minutes, when the dome is semi-inflated, go inside and straighten the internal sealing flap to get the best seal around the perimeter. Remember to close the zipper door behind you.

You will need to cut the skirt to fit neatly around the blower unit. From inside the dome cut two vertical slits in the skirt 50mm (2") in from each side of the blower extension unit. Roll up the unused section of flap and rest it on top of the blower extension, the skirt should now fit nicely to each side of the blower extension with the overlap stopping any air from escaping. After 20-30 minutes the dome will be fully inflated and ready to use.

As you dome warms up in the sun any creases caused from being packed will disappear and the corners will stretch to form an even, regular shape.

CARE & MAINTENANCE

1. High winds

If winds of 55kph (35mph), gale force 8, are expected the dome should be deflated carefully by switching off the fan and holding the doors open. This should be carried out in calm weather conditions.

2. Zipper Doors

The Zipper Doors supplied with the dome can be reversed so as to open from the top, preventing children from reaching them. Replacement doors are available, please consult your dealer.

3. Cleaning and Storage

The dome skin will benefit if it is occasionally cleaned down with fresh tap water. This will remove any build up of dirt or chemicals. If the dome surface requires manual cleaning a mild detergent solution and a soft pool brush or cloth can be used. Care must be taken not to scratch the dome surface.

4. Storage

If the dome is to be stored away during the summer simply deflate on a calm day, clean and dry the dome skin, neatly fold and roll into a manageable package and place onto the dome Carry-Bag. You may require 3-4 able bodied persons, depending on the dome size to carry the dome safely.

Detach the Carbine Clips from the dome skin and remove the Eyebolts by unscrewing them. Plastic plugs are supplied with the dome to seal the plastic ground fixings, stopping them from filling with dirt and debris. Make sure you keep all the dome fixings in a safe place with the dome. Make sure you keep all the dome fixings in a safe place with the dome. Do not roll them up inside the dome as this may damage the dome skin.

In continuous hot weather we strongly recommend the dome is removed from the pool area. Excessive air temperature can cause heat exhaustion and stretching of the dome skin.

GENERAL PRECAUTIONS

- Keep sharp objects away from the dome skin.
- Do not let surrounding objects or trees which might damage the skin press against the dome.
- Children should be supervised at all times around the pool.
- Care must be taken while entering or leaving the dome.
- Do not prop the doors open for any length of time as this will cause the dome to semi-deflate and become unstable.
- If water collects on top of a deflated dome remove as much as possible with a submersible pump or bucket, taking care not to damage or abrade the dome skin. Then inflate.

In air temperatures of 5°C and below, the dome should not be used unless the swimming pool is heated as the dome skin becomes brittle which could cause cracking.

The pressure relief valve should be adjusted by adding or reducing water inside the bag to suit weather conditions.

The pressure relief valve is designed to relieve pressure inside the dome when necessary.

In warm conditions the dome will become hot inside and the water should be minimal within the P.R.V water bag. This will let more air out reducing the dome skin stretch and circulation more fresh air.

In cold and wind conditions the dome will require more pressure inside therefore the P.R.V water bag should be filled $\frac{2}{3}$ of water to keep air pressure up

It may damage the dome skin if the dome is let down and inflated too regularly.

If the dome is let down into the pool water and not washed, chlorine residue can make the dome skin go brittle.

DO'S & DON'TS

Ensure doors are closed after entry or exit.

Do not attempt to inflate or deflate the dome in windy conditions, choose a calm day.

Beware of excessive snow loading.

Should you be notified of impending power cuts, deflate the dome in calm weather prior to the cut.

Do not leave the door(s) open and unattended.

Do not obstruct the airflow of the blower unit.
Check intake grills for debris weekly.

Do not switch off the blower unit whilst the dome is inflated.

Do not use both doors simultaneously as severe air pressure loss will be experienced.

Remove all objects that might damage the dome's skin while inflating or deflating.

Repair all punctures immediately – check the dome's skin regularly.

When storing the dome ensure that it is clean and dry. Store away from hot pipes, vermin, fireworks, cigarette ends etc.

All dome users should familiarise themselves with these instructions.