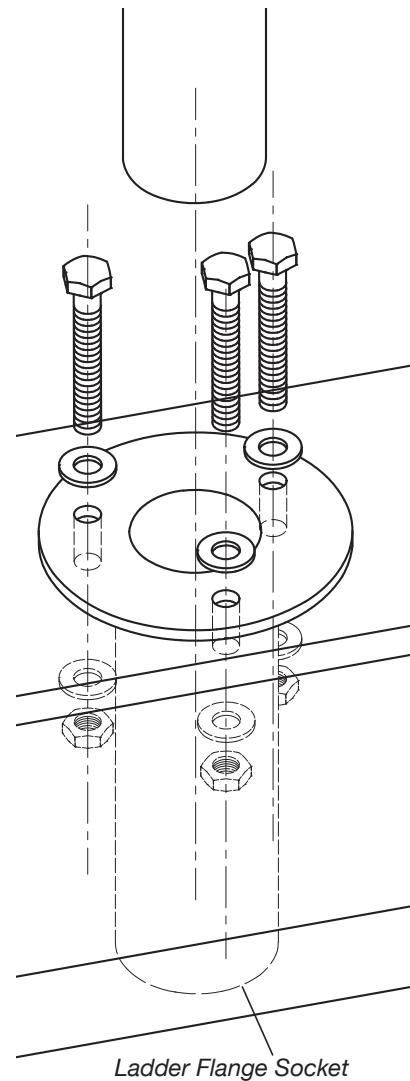


43mm POOL LADDER ASSEMBLY INSTRUCTIONS



The UK's Leading Independent Swimming Pool Manufacturer and Distributor

Offer ladder up to the pool so that the cushions rest on the inner surface of the wall and the metal frame is vertical. Mark the centre of the two ends and bore a 51mm (2") hole through the top plank, with the bit supplied. Fit the two ladder flange sockets in place, drill and bolt them securely, then re-fit the ladder.



Offer the completed ladder up to the pool edge to mark the position for anchors, ensuring the uprights come vertically up out of the water and are parallel.

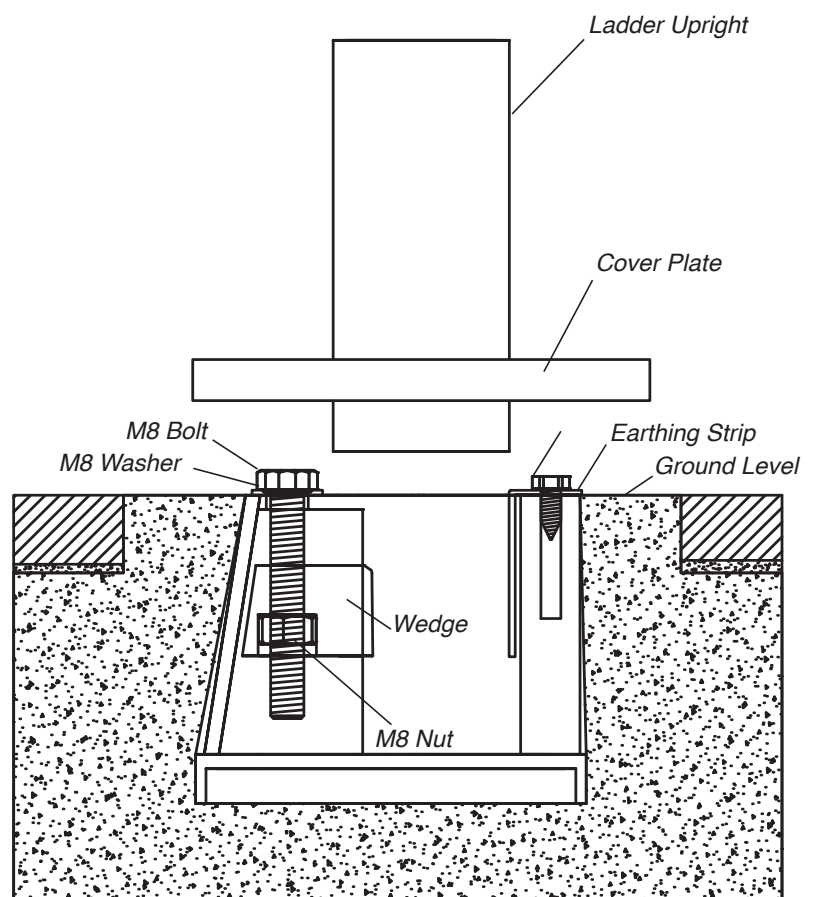
Mark the position for the anchors well outside their central position.

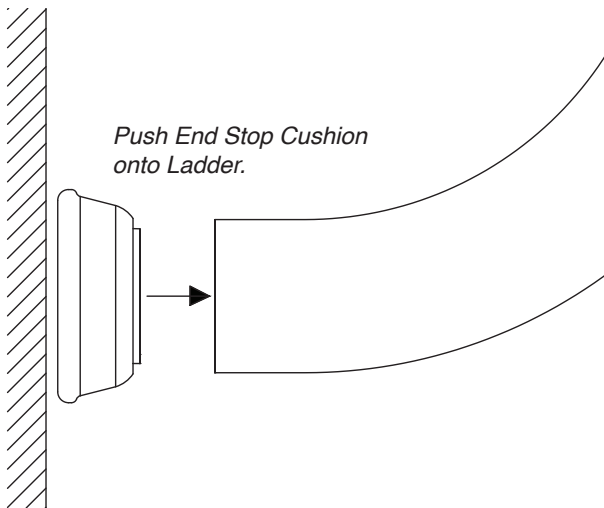
Excavate as necessary, a minimum 150mm (6") diameter hole for each anchor at least 80mm (3¼") deep.

Double check to make sure that the pool surround level will finish below or flush with the top of the anchor.

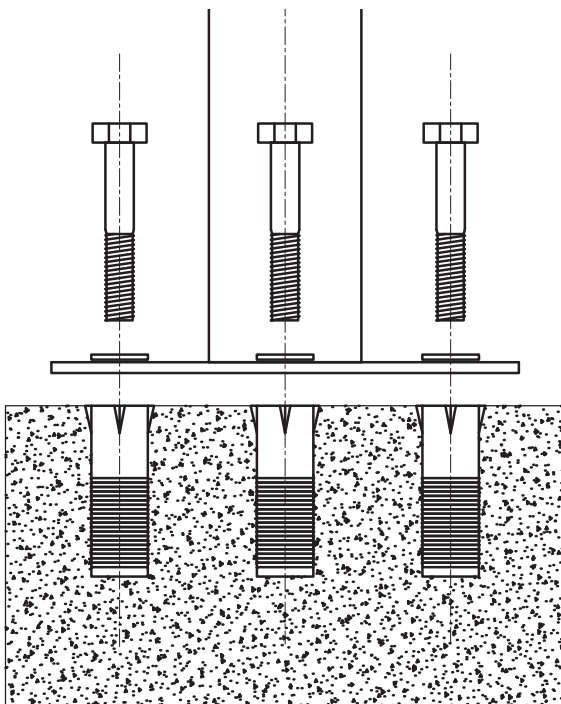
Make sure the top and bottom of the anchor are protected with the film/cap provided and fix in place with cement, concrete or resin as suitable.

Once set, lock the ladder uprights into the anchor by tightening the M8 bolt to draw the wedge up against the ladder tubes.



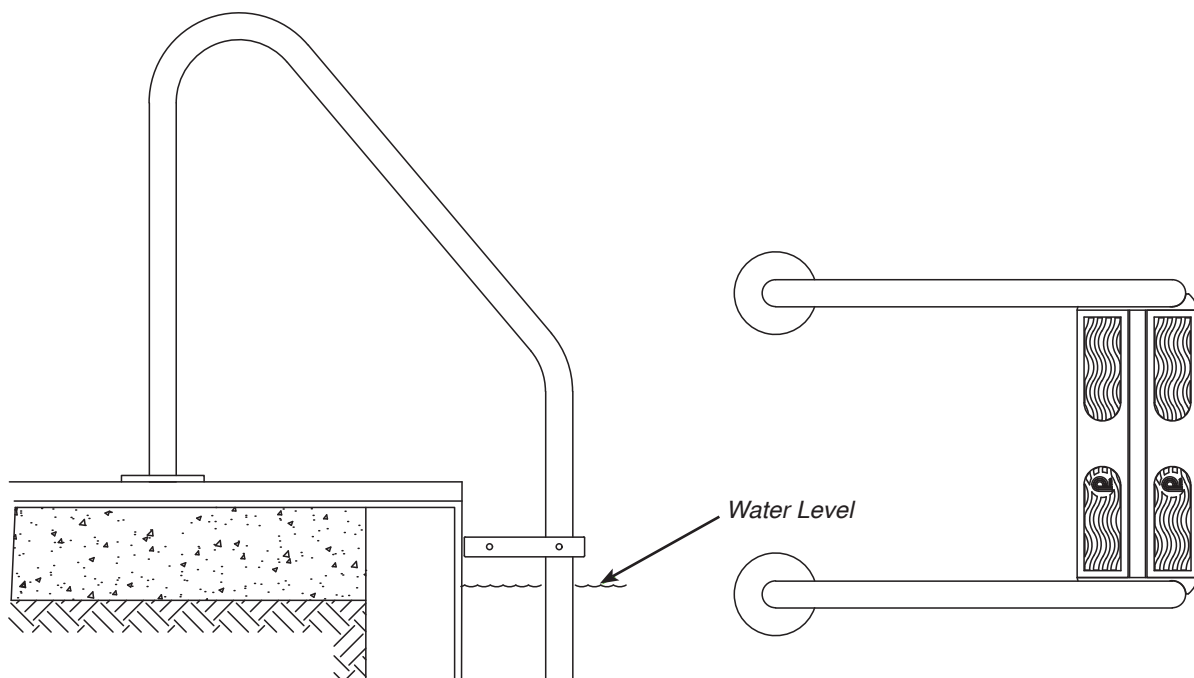


Assemble the ladder by attaching the treads to the uprights securely, using the ladder nuts and bolts provided. Then fitting the end stop cushions onto the end of the ladder.



Please note the fixings supplied are for use in concrete

Offer the ladder up to the pool so that the end cushions rest on the inner surface of the pool wall. Mark the centre of the plate holes and drill using a 16mm drill bit. Fit the ladder using the fixings supplied.





The UK's Leading Independent Swimming Pool Manufacturer and Distributor

Plastica Limited, Perimeter House, Napier Road
St Leonards-on-Sea, East Sussex TN38 9NY UK

+44 (0) 1424 857857 info@plasticapools.net
www.plasticapools.net

