

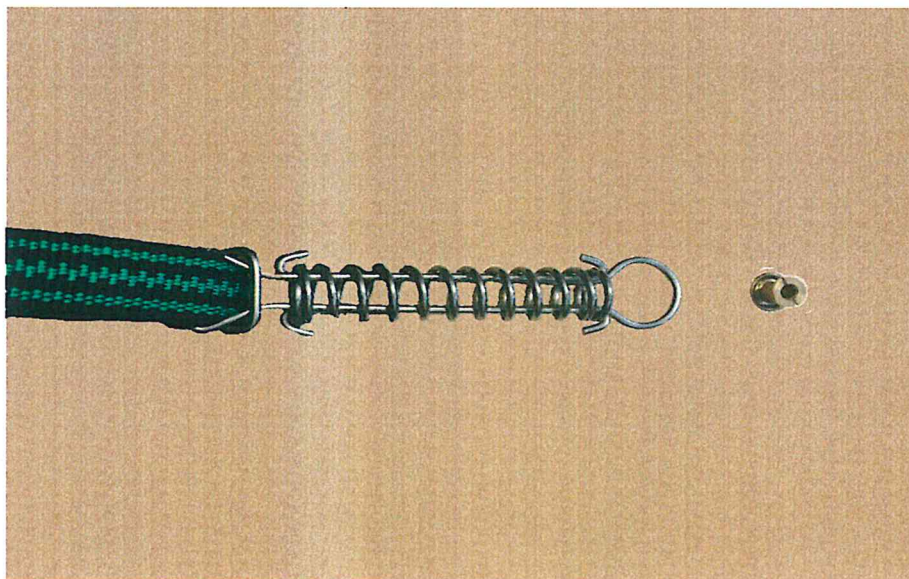
## FLUSH FIX INSTALLATION TOOL



You will find the above packed in with your Plastica winter debris cover. It is a flush fix installation tool, it helps aid the fitting of some/all springs onto the brass fixing with a good amount of tension. This tool has been praised especially when the weather is cold. The use of this tool is totally optional and down to the decision of the installer.

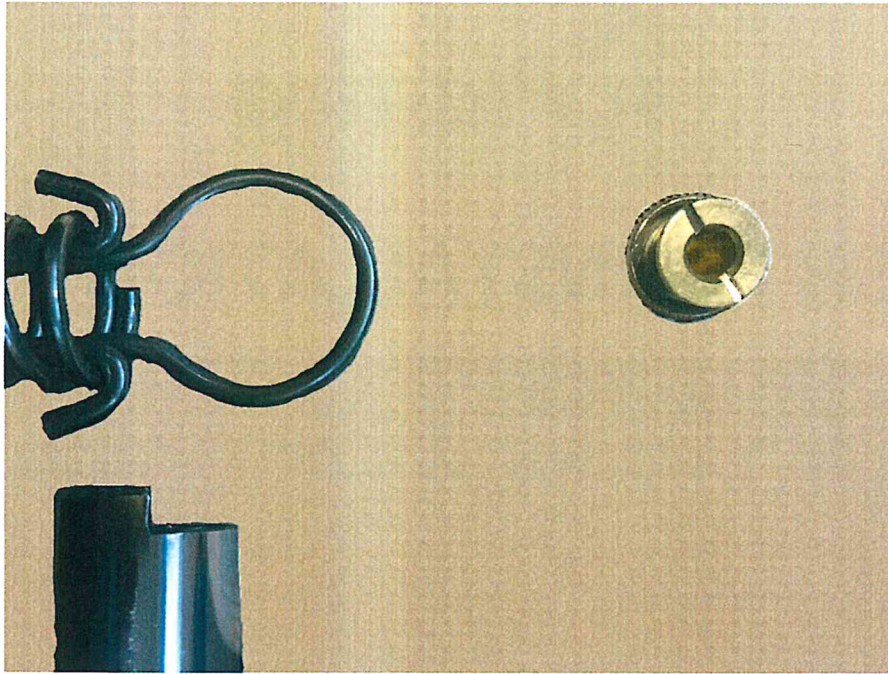
---

Please install the cover in the standard way, fitting any spring to brass anchors as you go, any that need tensioning can either be fitted in the usual way that the installer is happy with or with the use of the above tool.



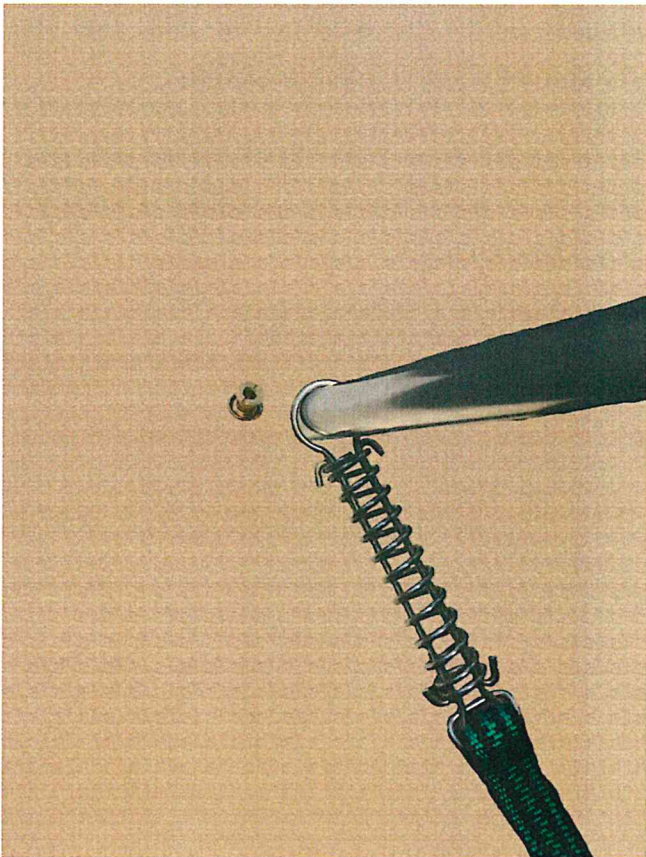
**FIGURE 1**

Figure 1 shows the spring in situ ready to be tensioned, the distance between spring and brass fixing will vary depending on the cover and site conditions.

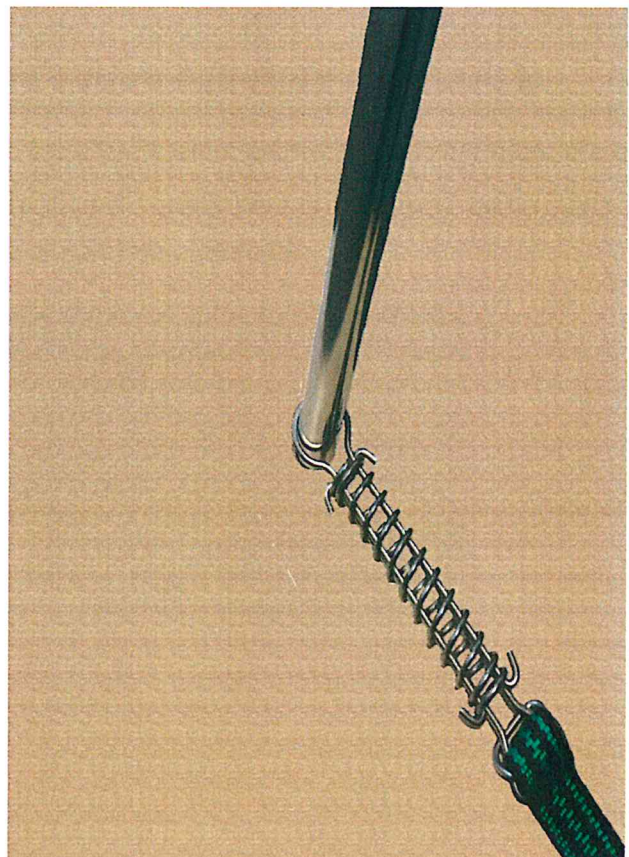


**FIGURE 2**

You will notice that the open end of the tool has a groove. (See figure 2) This is to allow the head of the spring to slot into this section for when fitting. The back protective cap on the tool will need to be removed first.



**FIGURE 3**



**FIGURE 4**

With the fixing tool in your hand push it through the hole of the spring as shown in figure 3.

Then with an adequate amount of tension and keeping the strap taught position the tool/spring so that it sits over the protruding brass anchor. Note: make sure that the tool is

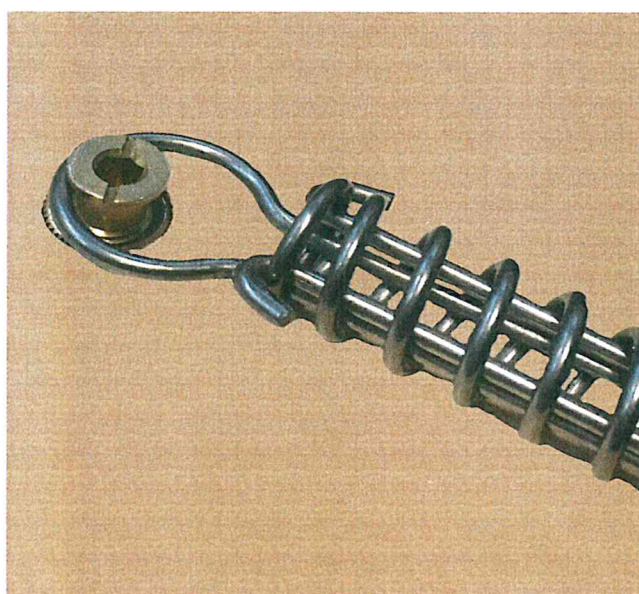
at a slight angle as this makes it easier to install. i.e. if you are fitting the strap like in Figure 4 and you have your back towards the pool keep the tool facing you slightly.



**FIGURE 5**

Once located onto the brass anchor carefully push the flush fix installation tool away from you. The spring should slide down the stainless steel and automatically lock into the groove.

See figure 5. Once the spring is home and locked into position the tool can be removed



**FIGURE 6**

The spring should now be fully tensioned and as show in figure 6.

Repeat the same procedure on any other springs that need installing in this way. This method does take several attempts to get right but is extremely useful in cold temperatures and inclement weather.

Put the protective black cap back on and put it away for future use, may we suggest the winter debris cover carry bag.

INST01 – Flush fix installation tool

DC22/2/2016 – Issue 1