

HAND CRAFTED » DIRECT DELIVERY » UP TO 10 METRES » EXERCISE POOLS » ALL THE EXTRAS

 *Plastica*



Filtration Enclosure

Wooden Swimming Pools



self-build instructions

For all Plastica Wooden Pools

www.woodenpools.net



INTRODUCTION

You are advised to read this entire manual before starting your project. In the event of any problems please contact your dealer immediately. Warranty claims will not be entertained if there is delay in reporting a problem or these instructions have not been followed correctly.

Recommendations for Storage after Delivery

- Do not store the wood in direct sunlight or under a black cover as this will cause distortion which will make installation extremely difficult.
- Assemble the pool structure as soon as possible after receipt.
- Assemble the pool structure in one go, preferably in the morning while the temperature is cool.
- If the pool must be stored then use a cool well-ventilated place, sheltered from sun and rain. If possible keep the pool in its original packaging.
- Components that are damaged, cracked or distorted due to bad storage and/or handling on site are not covered by warranty.

In the pre-assembly period the wood is sensitive to variations in temperature and humidity. It is therefore necessary that you take the following precautions immediately after delivery.

Wood is a living material and once cut the appearance of cracks, slight movements or changes in colour are normal and the planks (except in extreme circumstances) do not need replacing. The planks will have been recently treated and may be delivered to you still moist. In case of a rapid change in temperature; these planks can dry very quickly and lose 1 or 2mm of height. This might give you the impression that they are lifting up while they are actually shrinking.

General Safety Precautions

- Your filtration kit (filter, pump and any optional heating) should be placed at least 2m from the pool shell. You may need to purchase extra pipe and fittings for this. A good option is to house this in a filter box or small garden building.
- It is important to ensure the electricity supply for the pump or any other electrical item has 30m ARCD protection and conforms to current electrical regulations.
- Never leave children unattended around the pool when completed or at any stage of construction.
- The pool is designed for domestic use. Running along the top rail, diving or jumping into the water from the edge must not be allowed under any circumstances. The pool is not suitable for the addition of diving boards.

Required Tools

There are no specialist tools required but in addition to regular hand tools the following will be useful.

- Heavy mallets for assembling walls.
- Large spirit level and set square.
- Quality battery drill with screw driver bits, drill bits and counter sink.

- Clamps for holding components.
- Large mitre block with 90 & 22½ degree slots for cutting pipes and liner lock.
- Large scissors for cutting underlay felt.

Kit Contents

Check the packing list detailing the contents. As you unpack your pool check that you have all parts required and that their condition is satisfactory.

Contact your dealer immediately if you are in any doubt or believe parts may be missing/damaged.

Safety Precautions

Use safety goggles during installation to reduce risk of eye injury.

Gloves should be worn to protect fingers.



Never leave children unattended around the pool when completed or at any stage of construction.

RISK OF DROWNING

NATURAL TIMBER CHARACTERISTICS

Whilst we try to ensure that our timber products reach you in perfect condition, we have to remember we are dealing with a natural material and there are many characteristics which can arise.

These are completely normal and have no detrimental effect on the product. We also manufacture our products so that most natural defects are inside to product where you wouldn't see them. Or the plank may be reversible, so it can be used either way around.



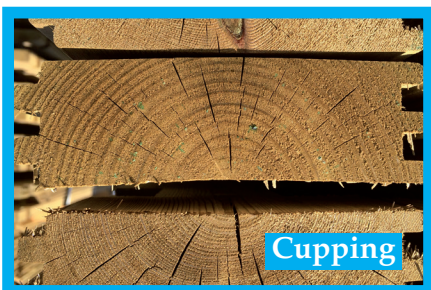
Shake appears like a series of splits. With a timber section of this size you will always encounter some degree of this (usually on one side). This does not affect the strength of the product and you will find the shake opens in continued warm weather and then closes up when the weather is wet and cooler or there is a lot of moisture in the air.



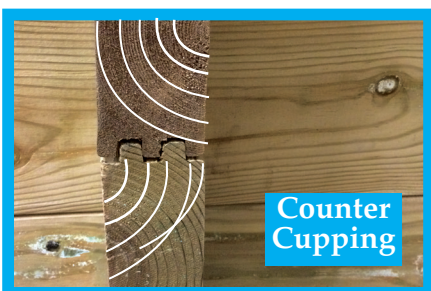
Pith is similar to the above defect and quite often found along side each other. Most of this is typically machined to be on the inside of the product.



Knots are typically found in timber as shown. These are not generally an issue and can actually be beneficial relieving stress points in timber. In many peoples opinion these add character to the products.



Cupping is mainly caused by the treatment of the timber. Where timber is kiln dried and then pressure treated it can cause cupping. Although we do limit this, the best way for you to counteract is, as you build the walls of your product, have one plank with the growth rings facing one way and the next with the rings facing the opposite way (counter cupping). This is only possible on square or rectangular products as the planks are reversible. On octagonal products if you have a problematic plank try it in another wall position to see where it will fit best.



TOTAL OR PARTIAL IN-GROUND INSTALLATION

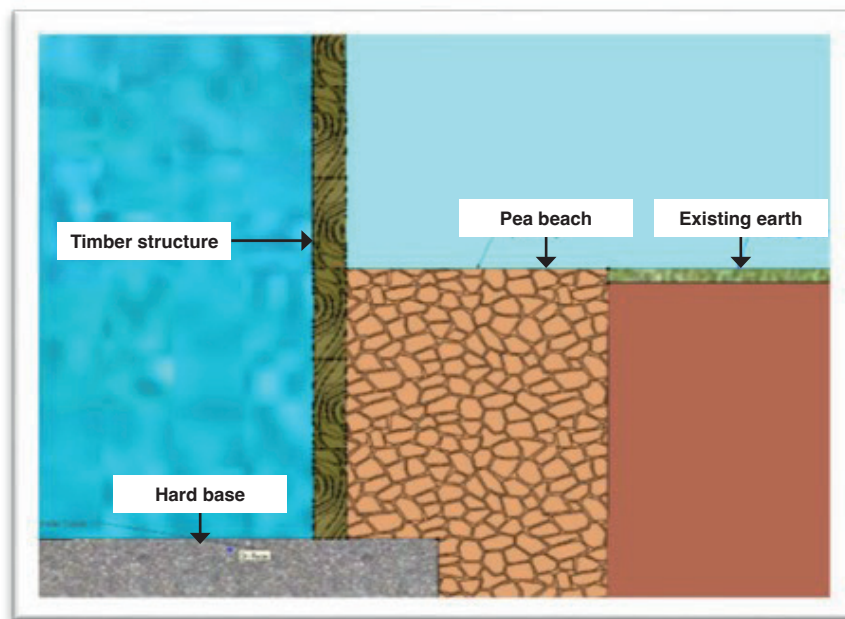
These timber products can be installed above ground, partially in or fully in ground. However, if you do have your product fully or partially in ground you will need to ensure that there is adequate drainage so that the timbers are not to be permanently submersed in water. Use an adequate amount of pea beach around the structure if possible, with a run off to a soak away or similar, so that water cannot build up around the structure and rot the timbers. If an adequate amount of drainage in the form of pea shingle or similar has not been used, this may affect the warranty.

This product has been treated with ACQ which is child play friendly and is warrantied against rot and insect attack (10 years on 44mm wood and 5 years on 27mm wood).

However, if this product is being installed completely or partially below ground level,

you will need to install adequate drainage around the pool. We recommend 300-450mm width of pea shingle, all the way around the product. Never use a plastic membrane around the outside of product as this will accelerate any deterioration of a timber product.

The timbers are treated for ground contact only and are not to be submersed permanently in water. Please also note that any modification to a wooden structure including drilling or cutting of a wall plank will void the warranty on any plank which is affected. As a precaution if you do require to modify a plank, we suggest that you treat the cut area with a good quality timber preservative if below ground level. Ensure any treatment does not come into contact with the liner.



Warranty

You must register your purchase at www.woodenpools.net/warranty-registration for your warranty to be valid.

Notes

Photos shown are the Filtration Enclosure to suit a Knightsbridge Wooden Pool. Enclosures to suit other Plastica wooden pools are one plank higher

There are sections that have been already made up that will help assemble the filtration enclosure, the doors (excluding the handles) and some of the roof sections of the enclosure.

Please read through the instructions carefully and make sure you fully understand them before assembling the

filtration enclosure. The last page includes a part list, these codes may come in handy if any replacement parts are required at a later date. We have designed this enclosure to be as large as possible to include all the filtration equipment needed to run your wooden pool, the roof sections are easily removed so access is easily gained during general use and servicing.



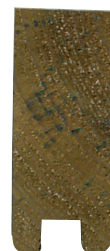
Side Bottom
half wall plank
BHWPT1102



Front Standard
wall plank
SWPT1354



Top half
plank
THPT1354



• Note the three different profiles used for building the structure walls.

- 1 Start with 2 side bottom half wall planks (**BHWPT1102**) and a front standard plank (**SWPT1354**). You will notice that the longer planks are for the front of the enclosure. Once the bottom row is assembled offer it up to the wall of the wooden pool. This will give you a guide to the positioning of the fixing struts (**FST1200**). **Note: fixing struts to be inside the enclosure.** Using a spirit level and cordless fix the struts (using screws **SCR097**) to the wooden pool. Pool enclosure to be positioned central to the skimmer unit. See Figure 1.



Figure 1

- 2 Next start laying the second row, we recommend the vented plank (**VSWPT1102**) is positioned as shown above. This gives good ventilation to the plant room. Insert the plastic vented insert to hole unless already fitted. See Figure 3.

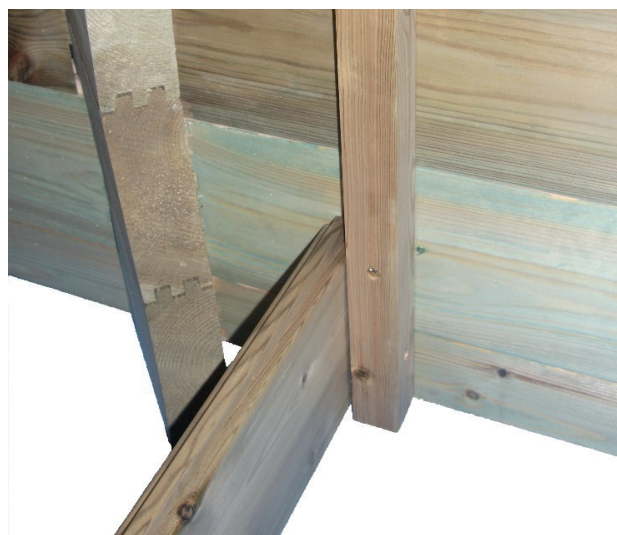


Figure 2

- 3 **Note:** If the Enclosure is to suit a Knightsbridge pool, then the 'front doorsill plank' (**FDPT1354**) is used as the second plank, any other pool it will be the third plank. (The doorsill plank is easily recognised as most of the tongue section has been removed).



Figure 3

- 4 Once the second (or third) row has been assembled, start fitting the 'front doorway side planks' (**FDSPT177**). See **Figure 4**.



Figure 4

- 5 Do not forget to fix the planks as you build the enclosure to the fixing struts. See **Figure 5**



Figure 5

- 6 Continue assembling the enclosure until all the side doorway planks are positioned. See **Figure 6**.



Figure 6

- 7 When all the side door planks are in position fix the top half plank (**THPT1354**) as shown in **Figure 7**.



Figure 7

- 8 Next Fit the Top curved sidewall plank (**CSWPT1102**) as shown, this is the last plank that is fixed (**SCR097**) to the fixing strut. The smaller curved section also needs to be secured to the overhang section of the enclosure. Note this may need to be pre-drilled so it can be fixed into position using **SCR097**. See **Figure 8**.



Figure 8

- 9 The next stage is to fit the skimmer lid plank sections together (**LPCUT1390**), this is cut so it gives easy access to the skimmer lid. You will notice that the roof sections have been cut at different angles, along with the lap wood (**LWCT60**). All sections to be joined (using **SCR097**) so that the angles run parallel with each other. See **Figure 9**.



Figure 9

- 10 The lid support section can now be fitted (**LST1150**), this needs to be fitted so it does not touch the skimmer basket but supports the sections of the lid planks. Once you are happy with the location fix using the screws provided. (**SCR096**) See **Figure 10**.



Figure 10

- 11 With the lid support section in position, the skimmer lid sections can be put into place. The larger sections are located on each side of the skimmer with equal amount of overhang over the outer side of the enclosure. At this stage please do not fit these sections to the lid support. See **Figure 11**.



Figure 11

- 12 With the larger sections in position (not fitted) line up the middle section and check that it fits directly on top of the skimmer. Tip: Line up the hole from the skimmer lid and finger hole from the lid plank. See **Figure 12**.



Figure 12

- 13** With the position of the skimmer lid plank in the correct location remove the smaller section and offer up the single roof plank (**LPT1390**). Make sure the tongues interlock and that the ends are flush. When happy screw these 3 sections to the enclosure. (Using **SCR097**) See **Figure 13** (Note here that the vertical lap wood (**LWCT60**) that we fitted in figure 9 should fit under the coping of the wooden pool. This may need adjusting with a plane.



Figure 13

- 14** The next job is to fit the remaining roof sections, these have been already assembled in the factory. 1x two piece section and 1x 3 piece section. Using the two piece section, fit this to the enclosure in the same method as the previous plank, making sure the tongues interlock and the ends are flush. (Using **SCR097**). See **Figure 14**.



Figure 14

- 15** Now the 3x piece section can be fitted. Note this section has two chamfered ends. (Using **SCR097**) See **Figure 15**.



Figure 15

- 16 The front door trim can be fitted now (**FDTT700**). This will need to be measured and cut to the correct length in order to fit the door frame. Fit the two side door trims first. (Using **SCR097**) Extra door trim has been included to fit the bottom (**FDBTT1000**), however you may not need to install this. It may be viable to offer up the doors first, this should give you an idea as to whether or not the bottom trim needs to be fitted. (On this particular enclosure the bottom trim has not been fitted). See Figure 16.



Figure 16

- 17 The next stage is to fit the doors, you will notice that the doors have been assembled and the hinges already fitted, however the door handles (**HANT100**) will need to be fitted to the door using the screws (**SCR097**) provided. As a guide these can be fitted approximately 100mm down from the top of the door and central to the smaller section of lap wood. See Figure 17.



Figure 17

- 18 Once the handles have been fitted the doors can be fixed to the door frame/trim. (Using **SCR086**) Don't forget to check the gap to see if the bottom trim needs to be fitted before the doors are hanged. See Figure 18.



Figure 18

- 19 Finally the door stay blocks can be fitted (**DSBT150**). The first is mounted to the centre of the doorsill plank and the second is fixed directly on top. (**SCR098**) The doors should be flush when closed.

See Figure 19.



Figure 19

Congratulations

Your wooden pool filtration enclosure is complete, please keep these instructions safe as you may need to refer to them at a later date. Please note adjustments may be required as the timber will shrink and swell. **If the pool is to be used by small children we would recommend the enclosure is secured with a suitable lock to help keep chemicals and electrical equipment safe.**



FILTRATION ENCLOSURE PARTS LIST

REF	DESCRIPTION	QTY	REF	DESCRIPTION	QTY
SWPT1354	1354mm Standard wall planks	x2	DSBT150	150mm x 45 x 18mm Door stay blocks	x2
THPT1354	1354mm Top half plank	x1	LWCT60	1390mm Lap wood cut to 60mm	x1
FDPT1354	1354mm Front doorsill plank	x1	LPCUT1390	1390mm Lid plank cut out	x1
BHWPT1102	1102mm Side Bottom half wall planks	x2	LPT1390	1390mm lid plank	x1
VSWPT1102	1102mm Vented side wall plank	x1		2 piece roof assembly, back section	x1
SSWPT1102	1102mm Standard side wall planks	x15		3 piece roof assembly, front section	x1
CSWPT1102	1102mm Top curved side wall planks	x2	CAP003	Soffit vent cap	x1
FDSPT177	177mm Front doorway side plank	x10	SCR097G	4.5mm x 50mm countersunk pozis	x28
FDIT700	700mm x 18 x 27mm Front door trims	x2	SCR096	5mm x 100mm countersunk pozis	x2
FDBIT1000	1000mm x 18 x 27mm Front door bottom trim	x1	SCR098	30mm x 4.5mm timber fix screws	x8
FST1200	1200mm x 34 x 34mm Fixing struts	x2	SCR086	3.5mm x 20mm countersunk pozis	x24
LST1150	1150mm x 45 x 27mm Lid support	x1	HIN001	Hinges 2in x 1.5in s/s 304	x4
HANT100	100mm x 45 x 27mm Handles	x2			
	Left hand door	x1			
	Right hand door	x1			

Works order No.

Contents Checked By:



The UK's Leading Independent Swimming Pool Manufacturer and Distributor



www.woodenpools.net



sales@woodenpools.net

Find us on

